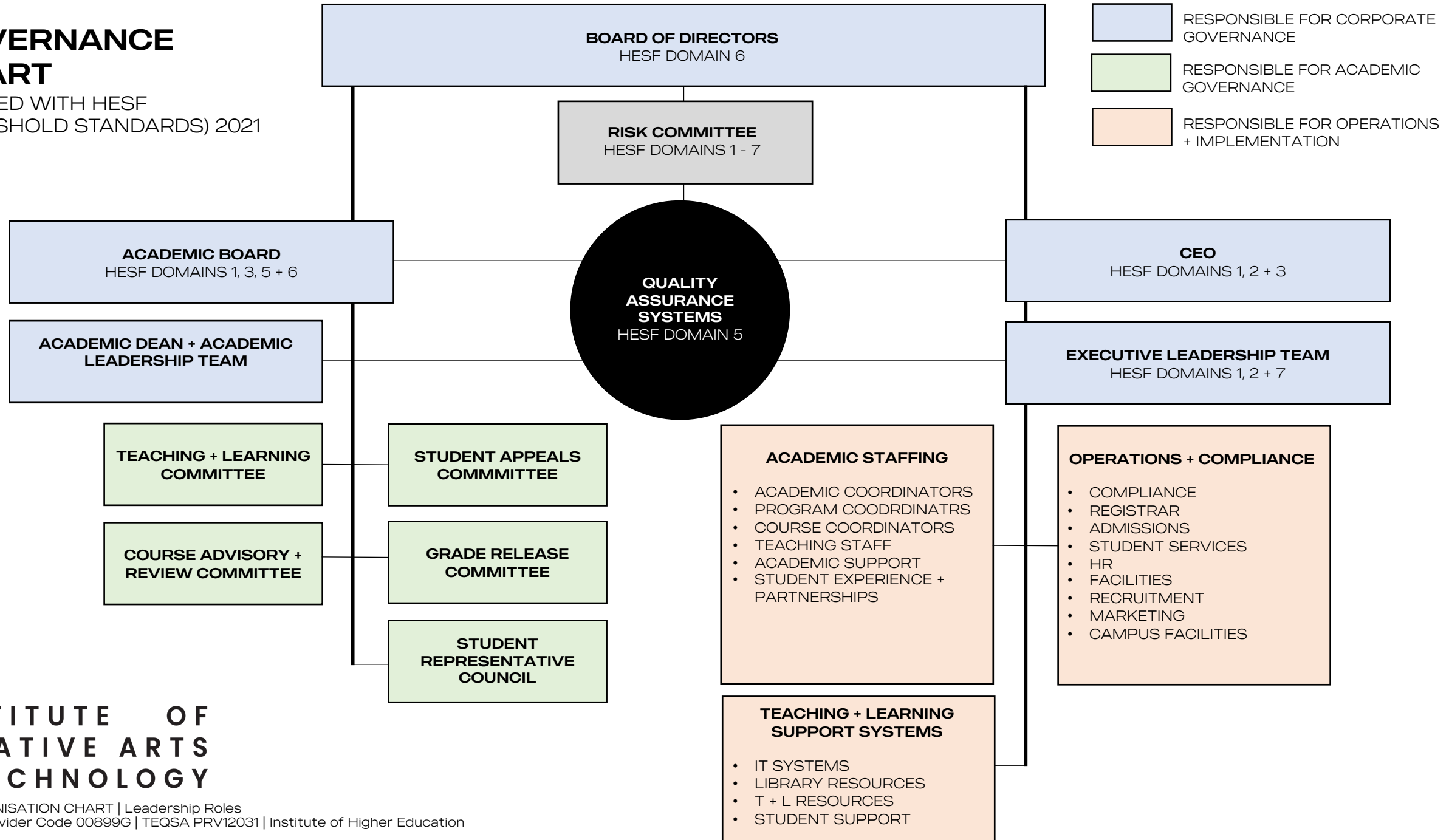


# GOVERNANCE CHART

ALIGNED WITH HESF (THRESHOLD STANDARDS) 2021



- RESPONSIBLE FOR CORPORATE GOVERNANCE
- RESPONSIBLE FOR ACADEMIC GOVERNANCE
- RESPONSIBLE FOR OPERATIONS + IMPLEMENTATION

# INSTITUTE OF CREATIVE ARTS + TECHNOLOGY